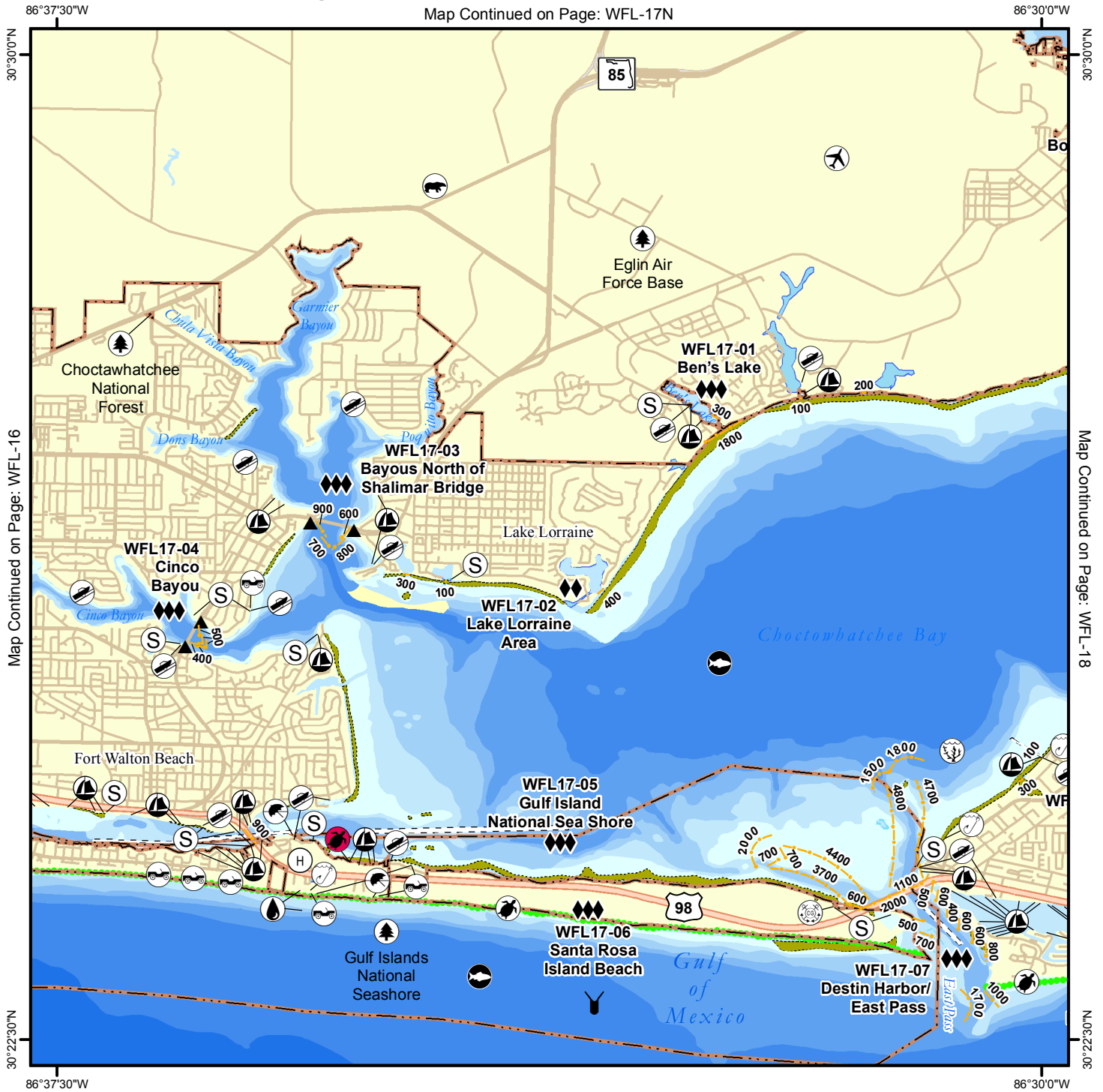


# Geographic Response Plan Map: WFL-17

Map Continued on Page: WFL-17N



Map Continued on Page: WFL-16

Map Continued on Page: WFL-18

<p><b>Environmentally Sensitive Areas</b></p> <p><b>Summer Protection Priority</b></p> <ul style="list-style-type: none"> <li>◆◆ A - Protect First</li> <li>◆◆ B - Protect after A Areas</li> <li>◆ C - Protect after B Areas</li> </ul> <p><b>Response Methods</b></p> <ul style="list-style-type: none"> <li>Y Skimmer</li> <li>Shallow Water Skimmer</li> <li>▲ Collection Point</li> <li>▲ Natural Collection Points</li> <li>General Booming Strategy (Length in Feet)</li> <li>Incident Command Posts</li> <li>Ⓢ Staging Areas</li> <li>Ⓡ Oil Spill Risk Sites</li> <li>ⓔ Equipment Storage Locations</li> <li>Beach or Water Access</li> </ul>	<p><b>Bio-Socioeconomic</b></p> <ul style="list-style-type: none"> <li>✈ Airport</li> <li>🐟 Aquaculture</li> <li>🌿 Aquatic Preserve/State Park</li> <li>🏗 Artificial Reef/Hardbottom</li> <li>🐭 Beach Mouse Habitat</li> <li>🐻 Black Bear Habitat</li> <li>🚤 Boat Ramp</li> <li>🚢 Coast Guard</li> <li>🤿 Diving</li> <li>🐸 Flatwoods Salamander</li> <li>🚁 Helicopter</li> <li>🏖 High Recreational Beach</li> <li>🐠 Manatee</li> </ul>	<ul style="list-style-type: none"> <li>⚓ Marina</li> <li>🏠 NERR</li> <li>🌳 National Park</li> <li>⚓ Naval Base</li> <li>🦀 Panama City Crayfish</li> <li>⚡ Power Plant</li> <li>🦎 Reptile Habitat of Concern</li> <li>🐢 Sea Turtle Nesting</li> <li>🐦 Shore Bird Habitat</li> <li>🌊 Spring</li> <li>🐟 Sturgeon</li> <li>💧 Water Intake</li> <li>🌳 Wildlife Refuge</li> </ul>	<ul style="list-style-type: none"> <li>🐢 Sea Turtle Nesting Beach</li> <li>🏠 Federal Managed Areas</li> <li>🏠 State Managed Areas</li> <li>🐟 Aquaculture/Oysters</li> <li>🏠 State Waters/County Line</li> <li>🚢 USCG Sector Boundary</li> </ul>
---	--	---	---

Sector Mobile Area Committee

N  
S  
E  
W

Fish and Wildlife Research Institute

0 0.5 1 1.5 2 Miles

Sector New Orleans      Sector Mobile      Sector St. Petersburg

# Geographic Response Plan Map: WFL-17SE

Map Continued on Page: WFL-17NE



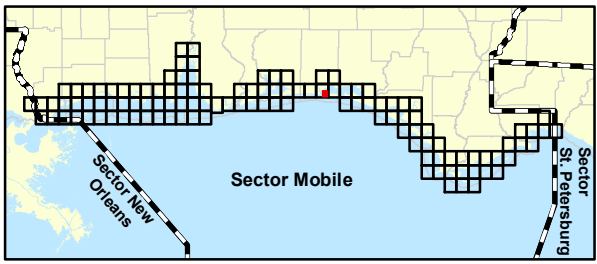
Map Continued on Page: WFL-17SW

Map Continued on Page: WFL-18SW

30°22'30\"/>

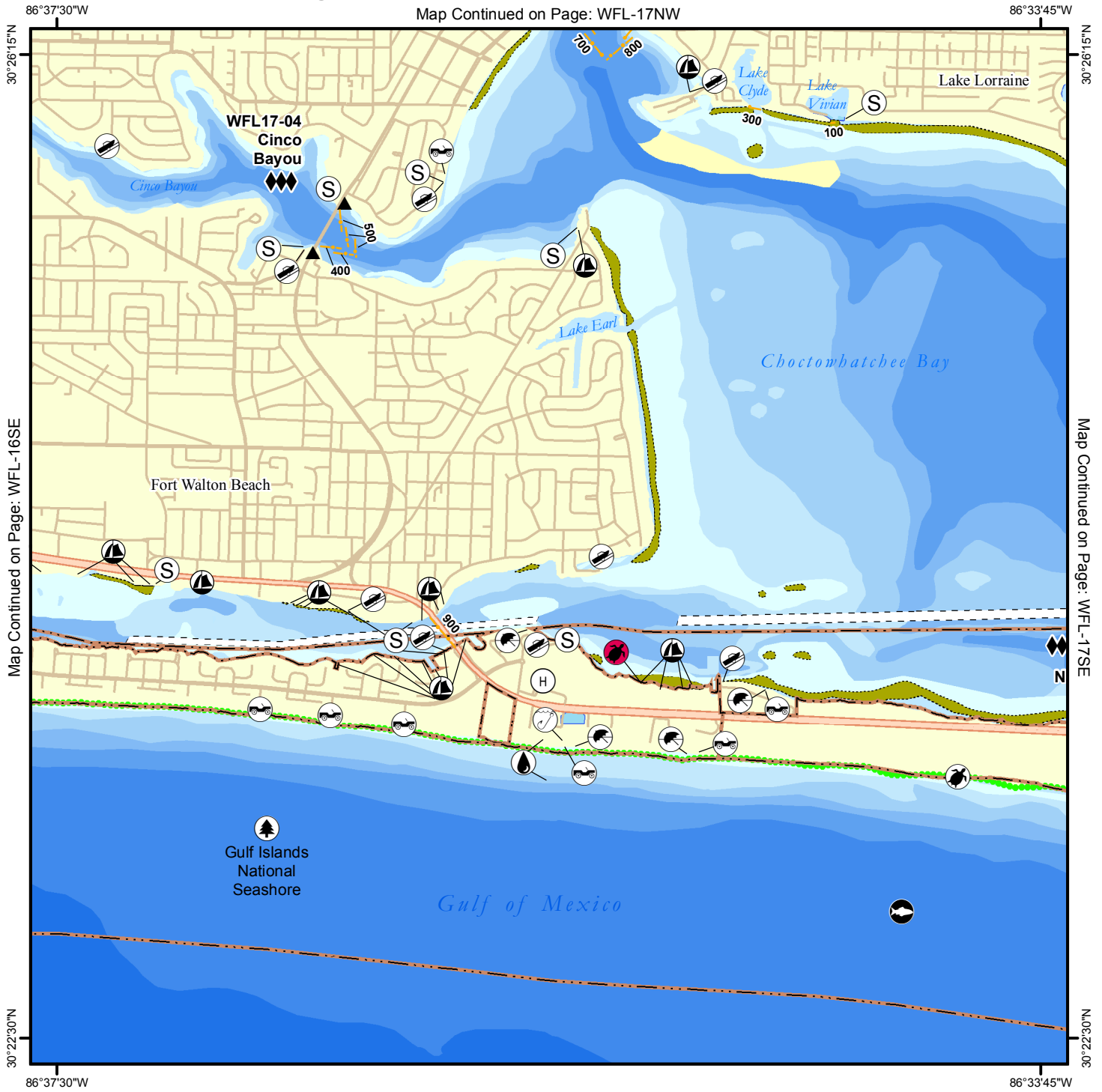
30°22'30\"/>

<p><b>Environmentally Sensitive Areas</b></p> <p><b>Summer Protection Priority</b></p> <ul style="list-style-type: none"> <li>◆◆◆ A - Protect First</li> <li>◆◆ B - Protect after A Areas</li> <li>◆ C - Protect after B Areas</li> </ul> <p><b>Response Methods</b></p> <ul style="list-style-type: none"> <li>Y Skimmer</li> <li>☉ Shallow Water Skimmer</li> <li>▲ Collection Point</li> <li>▲ Natural Collection Points</li> <li>General Booming Strategy (Length in Feet)</li> <li>▣ Incident Command Posts</li> <li>Ⓢ Staging Areas</li> <li>Ⓡ Oil Spill Risk Sites</li> <li>ⓔ Equipment Storage Locations</li> <li>Ⓜ Beach or Water Access Locations</li> </ul>	<p><b>Bio-Socioeconomic</b></p> <ul style="list-style-type: none"> <li>✈ Airport</li> <li>🐟 Aquaculture</li> <li>🌿 Aquatic Preserve/State Park</li> <li>🏗 Artificial Reef/Hardbottom</li> <li>🐭 Beach Mouse Habitat</li> <li>🐻 Black Bear Habitat</li> <li>🚤 Boat Ramp</li> <li>🚢 Coast Guard</li> <li>🤿 Diving</li> <li>🐸 Flatwoods Salamander</li> <li>🚁 Helicopter</li> <li>🏖 High Recreational Beach</li> <li>🐠 Manatee</li> </ul>	<ul style="list-style-type: none"> <li>⚓ Marina</li> <li>🏠 NERR</li> <li>🌳 National Park</li> <li>⚓ Naval Base</li> <li>👤 Panama City Crayfish</li> <li>⚡ Power Plant</li> <li>🦎 Reptile Habitat of Concern</li> <li>🐢 Sea Turtle Nesting</li> <li>🐦 Shore Bird Habitat</li> <li>🌊 Spring</li> <li>🐟 Sturgeon</li> <li>💧 Water Intake</li> <li>🌳 Wildlife Refuge</li> </ul>	<ul style="list-style-type: none"> <li>🐢 Sea Turtle Nesting Beach</li> <li>🇺🇸 Federal Managed Areas</li> <li>🇺🇸 State Managed Areas</li> <li>🐚 Aquaculture/Oyster</li> <li>🇺🇸 State Waters/County Line</li> <li>🚢 USCG Sector Boundary</li> </ul>	<p>Sector Mobile Area Committee</p> <p>Fish and Wildlife Research Institute</p> <p>0 0.25 0.5 0.75 1 Miles</p>
--	--	---	---	--



# Geographic Response Plan Map: WFL-17SW

Map Continued on Page: WFL-17NW



Map Continued on Page: WFL-16SE

Map Continued on Page: WFL-17SE

<p><b>Environmentally Sensitive Areas</b></p> <p><b>Summer Protection Priority</b></p> <ul style="list-style-type: none"> <li>◆◆◆ A - Protect First</li> <li>◆◆ B - Protect after A Areas</li> <li>◆ C - Protect after B Areas</li> </ul> <p><b>Response Methods</b></p> <ul style="list-style-type: none"> <li>Y Skimmer</li> <li>☉ Shallow Water Skimmer</li> <li>▲ Collection Point</li> <li>▲ Natural Collection Points</li> <li>~ General Booming Strategy (Length in Feet)</li> <li>▣ Incident Command Posts</li> <li>Ⓢ Staging Areas</li> <li>Ⓡ Oil Spill Risk Sites</li> <li>ⓔ Equipment Storage Locations</li> <li>Ⓜ Beach or Water Access Locations</li> </ul>	<p><b>Bio-Socioeconomic</b></p> <ul style="list-style-type: none"> <li>✈ Airport</li> <li>Ⓐ Aquaculture</li> <li>Ⓐ Aquatic Preserve/State Park</li> <li>Ⓜ Artificial Reef/Hardbottom</li> <li>🐭 Beach Mouse Habitat</li> <li>🐻 Black Bear Habitat</li> <li>⚓ Boat Ramp</li> <li>Ⓜ Coast Guard</li> <li>🤿 Diving</li> <li>🐸 Flatwoods Salamander</li> <li>Ⓜ Heliport</li> <li>🏖 High Recreational Beach</li> <li>🐠 Manatee</li> </ul>	<ul style="list-style-type: none"> <li>⚓ Marina</li> <li>Ⓜ NERR</li> <li>🌳 National Park</li> <li>⚓ Naval Base</li> <li>👤 Panama City Crayfish</li> <li>⚡ Power Plant</li> <li>🦎 Reptile Habitat of Concern</li> <li>🐢 Sea Turtle Nesting</li> <li>🐦 Shore Bird Habitat</li> <li>Ⓜ Spring</li> <li>🐟 Sturgeon</li> <li>💧 Water Intake</li> <li>🦉 Wildlife Refuge</li> </ul>	<ul style="list-style-type: none"> <li>🌿 Sea Turtle Nesting Beach</li> <li>🇺🇸 Federal Managed Areas</li> <li>🇫🇷 State Managed Areas</li> <li>🐚 Aquaculture/Oyster</li> <li>🇺🇸 State Waters/County Line</li> <li>🚢 USCG Sector Boundary</li> </ul>	<p>Sector Mobile Area Committee</p> <p>Fish and Wildlife Research Institute</p>
<p>0 0.25 0.5 0.75 1 Miles</p>				

**Name:** Ben's Lake

**Site ID:** WFL17-01

**Protection Priority (Season):** Spring:  Summer:  Fall:  Winter:

**Site Description:** Marinas and sheltered marshes

**GEOSPATIAL INFORMATION**

**Latitude (DMS):** 30° 27' 17.819" **Longitude (DMS):** 86° 32' 35.459" **County:** Okaloosa  
**Latitude (DD):** 30.454950 **Longitude (DD):** -86.543183 **SCAT Division:** Okaloosa County Division 2  
**ESI Map:** WFL-17 **ESI Name:** Fort Walton Beach, Fla.  
**NOAA Chart:** 11388\_1 **CHART Name:** CHOCTAWHATCHEE BAY  
**USGS Quad:** 30086-D5 **QUAD Name:** Fort Walton Beach

**Managed Area (if applicable):** Eglin AFB (private)

**General Location:** Destin Division of Sector, Eglin AFB

**CONTACT INFORMATION**

**Contacts:** Okaloosa County EOC 850-651-7150; Eglin Air Force Base (Spill Response Mgr) 850-240-1628; NRC 800-424-8802; FL State Watch Office 800-320-0519; FWC Non-Game Biologist 850-265-3676; DEP-OER 850-595-8300; D-8 Duty NOAA SSC (24hr) 206-375-5697; DOI - Regional Environmental Officer 404-331-4524 or 404-852-5414

**RESOURCES AT RISK INFORMATION**

**Shoreline Type:** Sheltered marshes, seawalls

**Habitat:** Sheltered marshes

**Wildlife:** Blue and Stone Crab, Pink, White, & Brown Shrimp, Eastern Oyster, FL Black Bear (T) in coastal areas, Least Tern (T), Bald Eagle (T),

**Threaten/Endangered Species:** Florida Black Bear (T) in coastal areas, Least Tern (T), Bald Eagle (T)

**Socio-Economic Resources:** Boating

**RESPONSE CONSIDERATIONS**

**Staging Area:** Eglin Boat Launch

**Collection Points:** At marina

**Area Access:** Boat, vehicle

**Spill Risk:**

**Response Resources:**

**PROTECTION STRATEGY INFORMATION**

**Tidal Range (FT):** **Average Current (KTS):** **Ease of Protection:** Easy  
**Min. Boom Length (FT):** 500 **Boom Type:** Hard **Booming Method:** Protection/Exclusion  
**Protection Strategy:** Exclusion boom across mouth of bayou.



**Name:** Lake Lorraine Area

**Site ID:** WFL17-02

**Protection Priority (Season):** Spring:  Summer:  Fall:  Winter:

**Site Description:** Residential housing and sheltered marsh (Lake mouths see protection)

**GEOSPATIAL INFORMATION**

<b>Latitude (DMS):</b> 30° 25' 55.273"	<b>Longitude (DMS):</b> 86° 33' 25.577"	<b>County:</b> Okaloosa
<b>Latitude (DD):</b> 30.432020	<b>Longitude (DD):</b> -86.557105	<b>SCAT Division:</b> Okaloosa County Division 2
<b>ESI Map:</b> WFL-17	<b>ESI Name:</b> Fort Walton Beach, Fla.	
<b>NOAA Chart:</b> 11388_1	<b>CHART Name:</b> CHOCTAWHATCHEE BAY	
<b>USGS Quad:</b> 30086-D5	<b>QUAD Name:</b> Fort Walton Beach	

**Managed Area (if applicable):**

**General Location:** City of Shalmar

**CONTACT INFORMATION**

**Contacts:** Okaloosa County EOC 850-651-7150; FWC Law Enforcement 850-595-8905; NRC 800-424-8802; FL State Watch Office 800-320-0519; FWC Non-Game Biologist 850-265-3676; DEP-OER 850-595-8300; D-8 Duty NOAA SSC (24hr) 206-375-5697; DOI - Regional Environmental Officer 404-331-4524 or 404-852-5414

**RESOURCES AT RISK INFORMATION**

**Shoreline Type:** Sheltered marsh, docks

**Habitat:** Sheltered marsh

**Wildlife:** Waterfowl, FI Black Bear

**Threaten/Endangered Species:** FI Black Bear

**Socio-Economic Resources:** Residential housing

**RESPONSE CONSIDERATIONS**

**Staging Area:** Migs Park Boat Ramp

**Collection Points:** Shallow water skimmers

**Area Access:** Boat, vehicle

**Spill Risk:**

**Response Resources:** USCG Destin

**PROTECTION STRATEGY INFORMATION**

<b>Tidal Range (FT):</b> <1	<b>Average Current (KTS):</b> 1	<b>Ease of Protection:</b> Easy
<b>Min. Boom Length (FT):</b> 1,500	<b>Boom Type:</b> Hard	<b>Booming Method:</b> Protection/Exclusion

**Protection Strategy:** Place exclusion boom across mouth of Lake Lorraine, Lake Vivian, Lake Clyde and other creek mouths.



Name: Bayous North of Shalmar Bridge

Site ID:

WFL17-03

Protection Priority (Season): Spring:  Summer:  Fall:  Winter: 

Site Description: Don's Bayou, Poquito Bayou, Garnier Bayou, and Vista Bayou

## GEOSPATIAL INFORMATION

Latitude (DMS): 30° 27' 3.715" N

Longitude (DMS): 86° 36' 28.831"

County: Okaloosa

Latitude (DD): 30.451032

Longitude (DD): -86.608008

SCAT Division: Okaloosa County Division 2

ESI Map: WFL-17

ESI Name: Fort Walton Beach, Fla.

NOAA Chart: 11388\_1

CHART Name: CHOCTAWHATCHEE BAY

USGS Quad: 30086-D5

QUAD Name: Fort Walton Beach

Managed Area (if applicable): Private areas on oceanside, Eglin AFB

General Location: Oceanside, Eglin

## CONTACT INFORMATION

**Contacts:** Okaloosa County EOC 850-651-7150; FWC Law Enforcement 850-595-8905 or 808-444-2322 or (Tallahassee Dispatch) 850-595-8980; Eglin Air Force Base (Spill Response Mgr) 850-240-1628; NRC 800-424-8802; FL State Watch Office 800-320-0519; FWC Non-Game Biologist 850-265-3676; DEP-OER 850-595-8300; D-8 Duty NOAA SSC (24hr) 206-375-5697; DOI - Regional Environmental Officer 404-331-4524 or 404-852-5414

## RESOURCES AT RISK INFORMATION

**Shoreline Type:** Exposed marshes, fine grained sand beaches, seawalls. Seawalls, exposed saltwater marsh on the N.E. portion of Poquito Bay. Sand beaches for southern 3/4, exposed marshes at Northern end of Garnier Bayou.

**Habitat:** Exposed marshes

**Wildlife:** Blue and Stone Crab, Pink, White & Brown Shrimp, Eastern Oyster, FL Black Bear (T) in coastal areas, Least Tern (T), Bald Eagle (T), Gulf Salt Marsh Snake, Diamondback Terrapin

**Threaten/Endangered Species:** Florida Black Bear (T) in coastal areas, Least Tern (T), Bald Eagle (T), Gulf Salt Marsh Snake, Diamondback Terrapin

**Socio-Economic Resources:** Residential housing, fishing, commercial and recreational boating

## RESPONSE CONSIDERATIONS

**Staging Area** Seaway Boat Launch (primary), Ricky Ave. Boat Launch (secondary), Garniers Beach Park

**Collection Points:** Shalmar Bridge and skimmers

**Area Access:** Boat, vehicle

**Spill Risk:** Shalmar Marinas

**Response Resources:** Eglin AFB, USCG Destin

## PROTECTION STRATEGY INFORMATION

**Tidal Range (FT):**

**Average Current (KTS):**

**Ease of Protection:** Medium

**Min. Boom Length (FT):** 2,000

**Boom Type:** Hard

**Booming Method:** Protection/Exclusion

**Protection Strategy:** Use chevron configuration at Shalimar Bridge and collect oil at either side of bridge.



Name: Cinco Bayou

Site ID:

WFL17-04

Protection Priority (Season): Spring:  Summer:  Fall:  Winter: 

Site Description: Brackish marsh and residential housing

## GEOSPATIAL INFORMATION

Latitude (DMS): 30° 25' 43.717"

Longitude (DMS): 86° 36' 36.831"

County: Okaloosa

Latitude (DD): 30.428810

Longitude (DD): -86.610231

SCAT Division: Okaloosa County Division 2

ESI Map: WFL-17

ESI Name: Fort Walton Beach, Fla.

NOAA Chart: 11388\_1

CHART Name: CHOCTAWHATCHEE BAY

USGS Quad: 30086-D5

QUAD Name: Fort Walton Beach

Managed Area (if applicable):

General Location: Destin Division of Sector, Ocean City, Ft. Walton

## CONTACT INFORMATION

Contacts: Okaloosa County EOC 850-651-7150;

Okaloosa County EOC 850-651-7150

NRC 800-424-8802; FL State Watch Office 800-320-0519; FWC Non-Game Biologist 850-265-3676; DEP-OER 850-595-8300; D-

8 Duty NOAA SSC (24hr) 206-375-5697; DOI - Regional Environmental Officer 404-331-4524 or 404-852-5414

## RESOURCES AT RISK INFORMATION

Shoreline Type: Solid man-made structures, exposed marshes

Habitat: A few sandy beaches and exposed marsh lands

Wildlife: Blue and Stone Crab, Pink, White, &amp; Brown Shrimp, Eastern Oyster, FL Black Bear (T) in coastal areas, Least Tern (T), Bald Eagle (T)

Threaten/Endangered Species: Florida Black Bear (T) in coastal areas, Least Tern (T), Bald Eagle (T)

Socio-Economic Resources: Commercial and recreational boating, archaeological/historic sites throughout

## RESPONSE CONSIDERATIONS

Staging Area: Seaway Boat Launch, City of Fort Walton Beach - Pochahantas Boat Ramp, Fort Walton Beach Yacht Club, Marler Plaza

Collection Points: Either side of Cinco Bayou bridge

Area Access: Boat, vehicle

Spill Risk:

Response Resources: USCG Destin

## PROTECTION STRATEGY INFORMATION

Tidal Range (FT): 1

Average Current (KTS): 1

Ease of Protection: Medium

Min. Boom Length (FT): 2,000

Boom Type: Hard

Booming Method: Protection/Exclusion

Protection Strategy: Use chevron configuration of protection/exclusion boom and collect oil on either side of bridge.



Name: Gulf Island National Sea Shore

Site ID:

WFL17-05

Protection Priority (Season): Spring:  Summer:  Fall:  Winter: 

Site Description: Sand beach with tidal flats on bayside

## GEOSPATIAL INFORMATION

Latitude (DMS): 30° 23' 59.818"

Longitude (DMS): 86° 33' 40.094"

County: Okaloosa

Latitude (DD): 30.399949

Longitude (DD): -86.561137

SCAT Division: Okaloosa County Division 2

ESI Map: WFL-17

ESI Name: Fort Walton Beach, Fla.

NOAA Chart 11388\_1

CHART Name CHOCTAWHATCHEE BAY

USGS Quad: 30086-D5

QUAD Name: Fort Walton Beach

Managed Area (if applicable): Gulf Islands National Seashore

General Location: Destin Division of Sector

## CONTACT INFORMATION

**Contacts:** Okaloosa County EOC 850-651-7150; NPS-Gulf Islands National Seashore (Gulf Breeze Office) 850-934-2600; Eglin Air Force Base (Spill Response Mgr) 850-240-1628; NRC 800-424-8802; FL State Watch Office 800-320-0519; FWC Non-Game Biologist 850-265-3676; DEP-OER 850-595-8300; D-8 Duty NOAA SSC (24hr) 206-375-5697; DOI - Regional Environmental Officer 404-331-4524 or 404-852-5414

## RESOURCES AT RISK INFORMATION

**Shoreline Type:** Fine grained sand beach, solid man-made structures, exposed Tidal Flats**Habitat:** Exposed tidal flats, submerged aquatic vegetation.**Wildlife:** Blue and Stone Crab, Pink, White, & Brown Shrimp, Eastern Oyster, FL Black Bear (T) in coastal areas, Santa Rosa Beach Mouse, Least Tern (T), Black Skimmer, Snowy (T) & Piping (T) Plover, Bald Eagle (T), possible Gulf Sturgeon (T)**Threaten/Endangered Species:** Least Tern (T), Snowy Plover (T), Piping Plover (T),**Socio-Economic Resources:** Recreation area

## RESPONSE CONSIDERATIONS

**Staging Area** Gulf Island National Seashore ramp, GINS Beach access**Collection Points:** Destin Pass**Area Access:** Boat, vehicle**Spill Risk:** Destin Harbor Marinas**Response Resources:**

## PROTECTION STRATEGY INFORMATION

**Tidal Range (FT):****Average Current (KTS):** 1-2**Ease of Protection:** Hard**Min. Boom Length (FT):****Boom Type:** Sorbent**Booming Method:** Ensnarement**Protection Strategy:** Boom exposed tidal flats for protection with sorbent boom (pom-poms).



Name: Santa Rosa Island Beach

Site ID:

WFL17-06

Protection Priority (Season): Spring:  Summer:  Fall:  Winter: 

Site Description: Sand recreational beach, shorebird &amp; sea turtle nesting area

## GEOSPATIAL INFORMATION

Latitude (DMS): 30° 23' 29.175"

Longitude (DMS): 86° 33' 27.372"

County: Okaloosa

Latitude (DD): 30.391437

Longitude (DD): -86.557603

SCAT Division: Okaloosa County Division 2

ESI Map: WFL-17

ESI Name: Fort Walton Beach, Fla.

NOAA Chart 11388\_1

CHART Name CHOCTAWHATCHEE BAY

USGS Quad: 30086-D5

QUAD Name: Fort Walton Beach

Managed Area (if applicable): Eglin Air Force Base

General Location: Destin Division of Sector, Okaloosa Island

## CONTACT INFORMATION

**Contacts:** Okaloosa County EOC 850-651-7150; NPS-Gulf Islands National Seashore (Ranger) 850-934-2615, (24hr) 850-916-3010; GCRO-READ (Project Mgr) 251-442-6068 or (Chief of Science/CSRM) 850-916-3011; NRC 800-424-8802; FL State Watch Office 800-320-0519; FWC Non-Game Biologist 850-265-3676; DEP-OER 850-595-8300; D-8 Duty NOAA SSC (24hr) 206-375-5697; DOI - Regional Environmental Officer 404-331-4524 or 404-852-5414

## RESOURCES AT RISK INFORMATION

**Shoreline Type:** Fine grained sand beach**Habitat:** Shorebird & sea turtle nesting area

**Wildlife:** Blue & Stne Crab, Pnk, Wht, & Brwn Shrimp, Seagrass, Quahog, Plovers(T), Bald Eagle, Least Tern(T), Blk Skimmer, Am. Oystercatcher, Killdeer, Egrets, Herons, Santa Rosa Bch Mouse, Sea Turtles (Kemp's Ridley, Green, Loggerhead, Leatherback), poss. Gulf Sturgeon (T)

**Threaten/Endangered Species:** Least Terns, Perforate Reindeer Lichen (E), Kemp's Ridley(E), Green(E), Loggerhead(T), Leatherback(E)**Socio-Economic Resources:** Fishing pier, recreational fishing

## RESPONSE CONSIDERATIONS

**Staging Area** East Bay Marina, Destin Marina, USCG Station Destin, Marler Park**Collection Points:** On beach, offshore on water collection via skimmers**Area Access:** Boat, vehicle**Spill Risk:** Destin Harbor Marinas**Response Resources:** USCG Destin

## PROTECTION STRATEGY INFORMATION

**Tidal Range (FT):****Average Current (KTS):****Ease of Protection:** Hard**Min. Boom Length (FT):****Boom Type:** None**Booming Method:** NA**Protection Strategy:** Booming beach not recommended due to strong surf and tidal currents. Limit ATV and mechanical collection on beach during sea turtle and shorebird nesting season.

**Name:** Destin Harbor/East Pass (Destin Pass)

**Site ID:** WFL17-07

**Protection Priority (Season):** Spring:  Summer:  Fall:  Winter:

**Site Description:**

**GEOSPATIAL INFORMATION**

<b>Latitude (DMS):</b> 30° 23' 24.722"	<b>Longitude (DMS):</b> 86° 30' 2.821" W	<b>County:</b> Okaloosa
<b>Latitude (DD):</b> 30.390200	<b>Longitude (DD):</b> -86.500784	<b>SCAT Division:</b> Okaloosa County Division 2
<b>ESI Map:</b> WFL-17	<b>ESI Name:</b> Fort Walton Beach, Fla.	
<b>NOAA Chart:</b> 11388_1	<b>CHART Name:</b> CHOCTAWHATCHEE BAY	
<b>USGS Quad:</b> 30086-D5	<b>QUAD Name:</b> Fort Walton Beach	

**Managed Area (if applicable):**

**General Location:** Destin Division of Sector, City of Destin

**CONTACT INFORMATION**

**Contacts:** Okaloosa County EOC 850-651-7150; City of Destin Public Services Director 850-837-4242 (office) or 850-685-6100 (cell); NRC 800-424-8802; FL State Watch Office 800-320-0519; FWC Non-Game Biologist 850-265-3676; DEP-OER 850-595-8300; D-8 Duty NOAA SSC (24hr) 206-375-5697; DOI - Regional Environmental Officer 404-331-4524 or 404-852-5414

**RESOURCES AT RISK INFORMATION**

**Shoreline Type:** Fine grained sand beach, solid man-made structures

**Habitat:** Sand beach

**Wildlife:** Blue & Stne Crab, Pnk, Wht, & Brwn Shrimp, Plovers(T), Bald Eagle, Least Tern(T), Blk Skimmer, Am. Oystercatcher, Killdeer, Egrets, Herons, Santa Rosa Bch Mouse, Kemp's Ridley(E), Green(E), Loggerhead(T), Leatherback(E), FL Black Bear(T), poss. Gulf Sturgeon (T), shorebirds

**Threaten/Endangered Species:** Green (E) and Loggerhead (T) Sea Turtle, Least Tern (T), Snowy Plover (T), Piping Plover (T), Bald Eagle (T), Red Knot

**Socio-Economic Resources:** Commercial and recreational boating and fishing

**RESPONSE CONSIDERATIONS**

**Staging Area:** East Bay Marina, USCG Destin, Destin Marina

**Collection Points:** Beach inside Pass and skimmers on bay-side

**Area Access:** Boat, vehicle

**Spill Risk:** Marinas within Destin Harbor

**Response Resources:** USCG Destin

**PROTECTION STRATEGY INFORMATION**

<b>Tidal Range (FT):</b>	<b>Average Current (KTS):</b> 7+	<b>Ease of Protection:</b> Unknown
<b>Min. Boom Length (FT):</b>	<b>Boom Type:</b> Hard	<b>Booming Method:</b> Deflection, Protection/Exclusion

**Protection Strategy:** Barrier boom across mouth of cove (200 ft).



Facility Name: The Boat Marina and Boat Yard

Site ID:

Data Collector (Agency): FWC-FWRI

Survey Type: Planning

Survey Date: 2008-03-13 00:00

Managing Agency:

General Manager/Contact Person:

Contact Phone #: 850-244-2722

SCAT Description: Okaloosa County Division 2

Physical Address: 32 Miracle Strip Parkway SW

City: Ft Walton Beach

State: Florida

Zip Code 32548

County: Okaloosa

## GEOSPATIAL INFORMATION

Latitude (DMS): 30° 24' 13.284" N

Longitude (DMS): 86° 37' 6.840" W

Latitude (DD): 30.40369000

Longitude (DD): -86.61856666

## SITE DESCRIPTION

Site Type: Staging Area; Boat Ramp; Marina

Access: Private

Operational Status:

Scale of Staging Area:

Hours of Operation: 24 hours

Days of Operation: 7 days a week

Water Type: Salt

Water Body Name: Santa Rosa Sound

Boat Launch Capability: Boat Lift

Number of Boat Ramps: 0

Number of Boat Ramp Lanes: 0

Number of Boat Slips: 0

Number of Moorings: 0

Boat Ramp Surface Composition:

Water Depth at End of Boat Ramp: 6 - 8 feet

Wave Energy at Site: Low

Shoreline Type in Viewable Vicinity: Seawall

Access Constraints: No Access Constraints

Crane Capabilities: Suitable for small crane

Collection Point Capabilities:

Parking Capacity for Trailers: 15

Parking Capacity for Cars: 30

Parking Lot Dimensions:

Parking Surface: Paved - Concrete or Asphalt; Dirt/Gravel

Capable for Light or Heavy Equipment and Type:

Boom Available On-Site and Length:

## ADDITIONAL AMMENITIES

Fuels Available: Gasoline; Diesel

Propane or Natural Gas Available

Water Available: Yes

Fire Hydrant:

Pumpout Available: No Pumpout

Bathrooms Available: Restroom Facilities

Electricity Amperage Available: 30 Amp Hookup; 50 Amp H

Camping Facilities:

Food Available: Food Available (1-5 mi.)

Security Available and Hours On Duty:

## GENERAL INFORMATION AND COMMENTS

Special/Pre-Planned Events and Dates:

Comments:

Photo URL:



Facility Name: Eglin Air Force Base (Santa Rosa Island)

Site ID:

Data Collector (Agency):

Survey Type:

Survey Date:

Managing Agency: Eglin Air Force Base

General Manager/Contact Person:

Contact Phone #:

SCAT Description: Okaloosa County Division 2

Physical Address: US 98

City: Ft Walton

State: Florida

Zip Code 32548

County: Okaloosa

## GEOSPATIAL INFORMATION

Latitude (DMS): 30° 23' 26.868" N

Longitude (DMS): 86° 31' 9.047" W

Latitude (DD): 30.39079679

Longitude (DD): -86.51917964

## SITE DESCRIPTION

Site Type: Staging Area

Access:

Operational Status:

Scale of Staging Area:

Hours of Operation:

Days of Operation:

Water Type: Salt

Water Body Name: Choctawhatchee Bay

Boat Launch Capability:

Number of Boat Ramps: 0

Number of Boat Ramp Lanes: 0

Number of Boat Slips: 0

Number of Moorings: 0

Boat Ramp Surface Composition:

Water Depth at End of Boat Ramp:

Wave Energy at Site:

Shoreline Type in Viewable Viscinity:

Access Constraints:

Crane Capabilities:

Collection Point Capabilities:

Parking Capacity for Trailers: 0

Parking Capacity for Cars: 0

Parking Lot Dimensions:

Parking Surface:

Capable for Light or Heavy Equipment and Type:

Boom Available On-Site and Length:

## ADDITIONAL AMMENITIES

Fuels Available:

Propane or Natural Gas Available

Water Available:

Fire Hydrant:

Pumpout Available:

Bathrooms Available:

Electricity Amperage Available:

Camping Facilities:

Food Available:

Security Available and Hours On Duty:

## GENERAL INFORMATION AND COMMENTS

Special/Pre-Planned Events and Dates:

Comments:

Photo URL:



**Facility Name:** Marler Plaza

**Site ID:** Marler Plaza

**Data Collector (Agency):**

**Survey Type:**

**Survey Date:**

**Managing Agency:**

**General Manager/Contact Person:**

**Contact Phone #:**

**SCAT Description:** Okaloosa County Division 2

**Physical Address:** 224 Eglin Parkway

**City:** Fort Walton Beach

**State:** Florida

**Zip Code:** 32547

**County:** Okaloosa

**GEOSPATIAL INFORMATION**

**Latitude (DMS):** 30° 25' 43.838" N

**Longitude (DMS):** 86° 36' 27.522" W

**Latitude (DD):** 30.42884375

**Longitude (DD):** -86.60764502

**SITE DESCRIPTION**

**Site Type:** Staging Area

**Access:**

**Operational Status:**

**Scale of Staging Area:**

**Hours of Operation:**

**Days of Operation:**

**Water Type:** Salt

**Water Body Name:** Cinco Bayou

**Boat Launch Capability:**

**Number of Boat Ramps:** 0

**Number of Boat Ramp Lanes:** 0

**Number of Boat Slips:** 0

**Number of Moorings:** 0

**Boat Ramp Surface Composition:**

**Water Depth at End of Boat Ramp:**

**Wave Energy at Site:**

**Shoreline Type in Viewable Viscinity:**

**Access Constraints:**

**Crane Capabilities:**

**Collection Point Capabilities:**

**Parking Capacity for Trailers:** 0

**Parking Capacity for Cars:** 200

**Parking Lot Dimensions:**

**Parking Surface:**

**Capable for Light or Heavy Equipment and Type:**

**Boom Available On-Site and Length:**

**ADDITIONAL AMMENITIES**

**Fuels Available:**

**Propane or Natural Gas Available**

**Water Available:**

**Fire Hydrant:**

**Pumpout Available:**

**Bathrooms Available:** Restroom Facilities

**Electricity Amperage Available:**

**Camping Facilities:**

**Food Available:** On-Site Grocery/Restaurant

**Security Available and Hours On Duty:**

**GENERAL INFORMATION AND COMMENTS**

**Special/Pre-Planned Events and Dates:**

**Comments:** Land based staging area can be used in coordination with seaway boat launch to the southside of bridge.

**Photo URL:**



Facility Name: Eglin Boat Launch

Site ID: OL00031GD

Data Collector (Agency): State of Florida

Survey Type: Planning

Survey Date: 2008-04-17 00:00

Managing Agency: U S Airforce

General Manager/Contact Person:

Contact Phone #:

SCAT Description: Okaloosa County Division 2

Physical Address: 941 Boatner Road

City: Eglin Air Force Base

State: Florida

Zip Code 32542

County: Okaloosa

## GEOSPATIAL INFORMATION

Latitude (DMS): 30° 27' 20.136" N

Longitude (DMS): 86° 32' 40.854" W

Latitude (DD): 30.45559333

Longitude (DD): -86.54468166

## SITE DESCRIPTION

Site Type: Boat Ramp

Access: Private

Operational Status:

Scale of Staging Area:

Hours of Operation: 24 hours

Days of Operation: 7 days a week

Water Type: Salt

Water Body Name: Bens Lake

Boat Launch Capability: Boats Under 25 ft

Number of Boat Ramps: 2

Number of Boat Ramp Lanes: 2

Number of Boat Slips: 2

Number of Moorings: 2

Boat Ramp Surface Composition: Cement or Asphalt

Water Depth at End of Boat Ramp: 2 - 4 feet

Wave Energy at Site: Low

Shoreline Type in Viewable Vicinity: Soft Stem Veg.

Access Constraints: Fenced

Crane Capabilities: Not suitable for crane

Collection Point Capabilities:

Parking Capacity for Trailers: 5

Parking Capacity for Cars: 10

Parking Lot Dimensions:

Parking Surface: Paved - Concrete or Asphalt; Dirt/Gravel; Grass

Capable for Light or Heavy Equipment and Type:

Boom Available On-Site and Length:

## ADDITIONAL AMMENITIES

Fuels Available: No Fuel

Propane or Natural Gas Available

Water Available: Yes

Fire Hydrant:

Pumpout Available: No Pumpout

Bathrooms Available: Restroom Facilities

Electricity Amperage Available: No Electricity Available

Camping Facilities:

Food Available: Food Available (1-5 mi.)

Security Available and Hours On Duty:

## GENERAL INFORMATION AND COMMENTS

Special/Pre-Planned Events and Dates:

Comments:

Photo URL:



Facility Name: Megs Park Boat Launch

Site ID:

Data Collector (Agency): State of Florida

Survey Type: Planning

Survey Date: 2008-04-17 00:00

Managing Agency: County

General Manager/Contact Person:

Contact Phone #:

SCAT Description: Okaloosa County Division 2

Physical Address: 45A Meigs Drive

City: Shalimar

State: Florida

Zip Code 32579

County: Okaloosa

## GEOSPATIAL INFORMATION

Latitude (DMS): 30° 26' 0.222" N

Longitude (DMS): 86° 34' 29.670" W

Latitude (DD): 30.43339500

Longitude (DD): -86.57490833

## SITE DESCRIPTION

Site Type: Staging Area; Boat Ramp

Access: Public

Operational Status:

Scale of Staging Area:

Hours of Operation: Sunrise to Sunset

Days of Operation: 7 days

Water Type: Salt

Water Body Name: Lake Vivian

Boat Launch Capability: Boats Under 25 ft

Number of Boat Ramps: 1

Number of Boat Ramp Lanes: 1

Number of Boat Slips: 0

Number of Moorings: 0

Boat Ramp Surface Composition: Cement or Asphalt; Other

Water Depth at End of Boat Ramp: 2 - 4 feet

Wave Energy at Site: Low

Shoreline Type in Viewable Vicinity: Seawall; Soft Sand

Access Constraints: Fenced

Crane Capabilities: Not suitable for crane; Suitable for large crane

Collection Point Capabilities:

Parking Capacity for Trailers: 2

Parking Capacity for Cars: 10

Parking Lot Dimensions:

Parking Surface: Paved - Concrete or Asphalt; Dirt/Gravel

Capable for Light or Heavy Equipment and Type:

Boom Available On-Site and Length:

## ADDITIONAL AMMENITIES

Fuels Available: No Fuel

Propane or Natural Gas Available

Water Available: No Water

Fire Hydrant:

Pumpout Available: No Pumpout

Bathrooms Available: Port-a-Pottie

Electricity Amperage Available: No Electricity Available

Camping Facilities:

Food Available: Food Available (1-5 mi.)

Security Available and Hours On Duty:

## GENERAL INFORMATION AND COMMENTS

Special/Pre-Planned Events and Dates:

Comments:

Photo URL:



Facility Name: Garnier's Beach Park Ramp

Site ID: OL00142ZS

Data Collector (Agency): State of Florida

Survey Type: Planning

Survey Date: 2008-04-17 00:00

Managing Agency:

General Manager/Contact Person:

Contact Phone #: 850-833-9576

SCAT Description: Okaloosa County Division 2

Physical Address: 257 Beachview Drive NE

City: Ft Walton Beach

State: Florida

Zip Code 32548

County: Okaloosa

## GEOSPATIAL INFORMATION

Latitude (DMS): 30° 25' 45.840" N

Longitude (DMS): 86° 36' 1.572" W

Latitude (DD): 30.42940000

Longitude (DD): -86.60043666

## SITE DESCRIPTION

Site Type: Boat Ramp

Access: Public

Operational Status:

Scale of Staging Area:

Hours of Operation: 6 am - 730pm winter, 830pm summer

Days of Operation: Open regular schedule, ie. M - F

Water Type: Salt

Water Body Name: Cinco Bayou

Boat Launch Capability: Boats Under 25 ft

Number of Boat Ramps: 1

Number of Boat Ramp Lanes: 1

Number of Boat Slips: 0

Number of Moorings: 0

Boat Ramp Surface Composition: Cement or Asphalt

Wave Energy at Site: Medium

Water Depth at End of Boat Ramp: 2 - 4 feet

Shoreline Type in Viewable Vicinity: Soft Sand

Access Constraints: No Access Constraints

Crane Capabilities: Not suitable for crane

Collection Point Capabilities:

Parking Capacity for Trailers: 2

Parking Capacity for Cars: 5

Parking Lot Dimensions:

Parking Surface: Paved - Concrete or Asphalt; Dirt/Gravel; Grass

Capable for Light or Heavy Equipment and Type:

Boom Available On-Site and Length:

## ADDITIONAL AMMENITIES

Fuels Available: No Fuel

Propane or Natural Gas Available

Water Available: Yes

Fire Hydrant:

Pumpout Available: No Pumpout

Bathrooms Available: Restrooms w/showers

Electricity Amperage Available: No Electricity Available

Camping Facilities:

Food Available: Food Available (1-5 mi.)

Security Available and Hours On Duty:

## GENERAL INFORMATION AND COMMENTS

Special/Pre-Planned Events and Dates:

Comments:

Photo URL: [http://ocean.floridamarine.org/waterphotos/ramp\\_photos/photo\\_id/1212/index.htm](http://ocean.floridamarine.org/waterphotos/ramp_photos/photo_id/1212/index.htm)



Facility Name: Seaway Boat Launch

Site ID: OL00116LQ

Data Collector (Agency): State of Florida

Survey Type: Planning

Survey Date: 2008-04-17 00:00

Managing Agency: City of Fort Walton Beach

General Manager/Contact Person:

Contact Phone #: 850-833-3405

SCAT Description: Okaloosa County Division 2

Physical Address: Seaway St

City: Fort Walton Beach

State: Florida

Zip Code 32548

County: Okaloosa

## GEOSPATIAL INFORMATION

Latitude (DMS): 30° 25' 30.756" N

Longitude (DMS): 86° 36' 33.234" W

Latitude (DD): 30.42521000

Longitude (DD): -86.60923166

## SITE DESCRIPTION

Site Type: Staging Area; Boat Ramp

Access: Government Owned for General Public Use

Operational Status: Open For Business

Scale of Staging Area:

Hours of Operation: 24 Hours

Days of Operation: 7 days a week

Water Type: Saltwater

Water Body Name: Cinco Bayou

Boat Launch Capability: Boats Under 25 ft

Number of Boat Ramps: 2

Number of Boat Ramp Lanes: 2

Number of Boat Slips: 0

Number of Moorings: 0

Boat Ramp Surface Composition: Poured in place concrete

Water Depth at End of Boat Ramp: 4 - 6 feet

Wave Energy at Site: Low

Shoreline Type in Viewable Vicinity: Seawall; Soft Sand; Soft Stem Veg.

Access Constraints: No Access Constraints

Crane Capabilities: Not suitable for crane

Collection Point Capabilities: Yes

Parking Capacity for Trailers: 13

Parking Capacity for Cars: 20

Parking Lot Dimensions:

Parking Surface: Asphalt

Capable for Light or Heavy Equipment and Type:

Boom Available On-Site and Length:

## ADDITIONAL AMMENITIES

Fuels Available: No Fuel

Propane or Natural Gas Available

Water Available: N/A

Fire Hydrant:

Pumpout Available: No Pumpout

Bathrooms Available: None

Electricity Amperage Available: No Electricity Available

Camping Facilities:

Food Available: Food Available (1-5 mi.)

Security Available and Hours On Duty:

## GENERAL INFORMATION AND COMMENTS

Special/Pre-Planned Events and Dates:

Comments:

Photo URL: [http://ocean.floridamarine.org/waterphotos/ramp\\_photos/photo\\_id/1211/index.htm](http://ocean.floridamarine.org/waterphotos/ramp_photos/photo_id/1211/index.htm)

Facility Name: Fort Walton Beach Yacht Club

Site ID:

Data Collector (Agency): FWC-FWRI

Survey Type: Planning

Survey Date: 2008-04-17 00:00

Managing Agency: Ft Walton Beach Yacht Club

General Manager/Contact Person: 850-863-3557

Contact Phone #: Barry Varnadore

SCAT Description: Okaloosa County Division 2

Physical Address: 180 Ferry Road Northeast

City: Fort Walton Beach

State: Florida

Zip Code 32548

County: Okaloosa

## GEOSPATIAL INFORMATION

Latitude (DMS): 30° 25' 36.300" N

Longitude (DMS): 86° 35' 31.128" W

Latitude (DD): 30.42674999

Longitude (DD): -86.59198000

## SITE DESCRIPTION

Site Type: Staging Area; Boat Ramp; Marina

Access: Private

Operational Status:

Scale of Staging Area:

Hours of Operation: 24 hours

Days of Operation: 7 days a week

Water Type: Salt

Water Body Name: Cinco Bayou

Boat Launch Capability: RAMP - Boats UNDER 25 FT; RAMP - Boats OVER 25 FT

Number of Boat Ramps: 1

Number of Boat Ramp Lanes: 1

Number of Boat Slips: 103

Number of Moorings: 103

Boat Ramp Surface Composition: Cement or Asphalt

Water Depth at End of Boat Ramp: 4 - 6 feet

Wave Energy at Site: Low

Shoreline Type in Viewable Vicinity: Seawall; Soft Sand

Access Constraints: Other Difficulty

Crane Capabilities: Not suitable for crane

Collection Point Capabilities:

Parking Capacity for Trailers: 50

Parking Capacity for Cars: 100

Parking Lot Dimensions:

Parking Surface: Paved - Concrete or Asphalt; Dirt/Gravel; Grass

Capable for Light or Heavy Equipment and Type:

Boom Available On-Site and Length:

## ADDITIONAL AMMENITIES

Fuels Available: No Fuel

Propane or Natural Gas Available

Water Available: Yes

Fire Hydrant:

Pumpout Available: Pumpout Available

Bathrooms Available: Restroom Facilities

Electricity Amperage Available: 120 V Standard 15 Amp; 30

Camping Facilities:

Food Available: On-Site Restaurant

Security Available and Hours On Duty:

## GENERAL INFORMATION AND COMMENTS

Special/Pre-Planned Events and Dates:

Comments:

Photo URL:



Facility Name: Destin Marina

Site ID: OL00133KY

Data Collector (Agency): FWC-FWRI

Survey Type: Planning

Survey Date: 2008-03-13 00:00

Managing Agency:

General Manager/Contact Person:

Contact Phone #: 850-837-2470

SCAT Description: Okaloosa County Division 2

Physical Address: 7 Calhoun Ave

City: Destin

State: Florida

Zip Code 32541

County: Okaloosa

## GEOSPATIAL INFORMATION

Latitude (DMS): 30° 23' 48.324" N

Longitude (DMS): 86° 30' 56.778" W

Latitude (DD): 30.39675666

Longitude (DD): -86.51577166

## SITE DESCRIPTION

Site Type: Staging Area; Boat Ramp; Marina

Access: Commercially Owned for General Public Use

Operational Status: Open For Business

Scale of Staging Area:

Hours of Operation: 24 Hours

Days of Operation: 7 days a week

Water Type: Saltwater

Water Body Name: Choctawhatchee Bay

Boat Launch Capability: Boats Under 25 ft

Number of Boat Ramps: 1

Number of Boat Ramp Lanes: 1

Number of Boat Slips: 6

Number of Moorings: 6

Boat Ramp Surface Composition: Poured in place concrete

Water Depth at End of Boat Ramp: 4 - 6 feet

Wave Energy at Site: Medium

Shoreline Type in Viewable Vicinity: Seawall

Access Constraints: No Access Constraints

Crane Capabilities: Not suitable for crane

Collection Point Capabilities:

Parking Capacity for Trailers: 30

Parking Capacity for Cars: 7

Parking Lot Dimensions:

Parking Surface: Gravel/Sand/Dirt

Capable for Light or Heavy Equipment and Type:

Boom Available On-Site and Length:

## ADDITIONAL AMMENITIES

Fuels Available: Gasoline; Diesel

Propane or Natural Gas Available

Water Available:

Fire Hydrant:

Pumpout Available: No Pumpout

Bathrooms Available: Port-a-let

Electricity Amperage Available: 120 V Standard 15 Amp

Camping Facilities:

Food Available: Food Available (1-5 mi.)

Security Available and Hours On Duty:

## GENERAL INFORMATION AND COMMENTS

Special/Pre-Planned Events and Dates:

Comments:

Photo URL: [http://ocean.floridamarine.org/waterphotos/ramp\\_photos/photo\\_id/1205/index.htm](http://ocean.floridamarine.org/waterphotos/ramp_photos/photo_id/1205/index.htm)

Facility Name: USCG Station Destin

Site ID:

Data Collector (Agency): FWC-FWRI

Survey Type: Planning

Survey Date: 2008-03-13 00:00

Managing Agency: USCG

General Manager/Contact Person:

Contact Phone #:

SCAT Description: Okaloosa County Division 2

Physical Address: ~US Hwy 98

City: Eglin Air Force Base

State: Florida

Zip Code 32548

County: Okaloosa

## GEOSPATIAL INFORMATION

Latitude (DMS): 30° 23' 30.912" N

Longitude (DMS): 86° 31' 34.782" W

Latitude (DD): 30.39191999

Longitude (DD): -86.52632833

## SITE DESCRIPTION

Site Type: Staging Area; Boat Ramp

Access: Private

Operational Status:

Scale of Staging Area:

Hours of Operation: 24 hours

Days of Operation: 7 days a week

Water Type: Salt

Water Body Name: Choctawhatchee Bay

Boat Launch Capability: RAMP - Boats OVER 25 FT

Number of Boat Ramps: 1

Number of Boat Ramp Lanes: 1

Number of Boat Slips: 0

Number of Moorings: 0

Boat Ramp Surface Composition: Cement or Asphalt

Water Depth at End of Boat Ramp: 4 - 6 feet

Wave Energy at Site: Medium

Shoreline Type in Viewable Vicinity: Seawall

Access Constraints: Fenced

Crane Capabilities: Suitable for small crane

Collection Point Capabilities:

Parking Capacity for Trailers: 20

Parking Capacity for Cars: 30

Parking Lot Dimensions:

Parking Surface: Paved - Concrete or Asphalt; Dirt/Gravel; Grass

Capable for Light or Heavy Equipment and Type:

Boom Available On-Site and Length:

## ADDITIONAL AMMENITIES

Fuels Available: Gasoline; Diesel

Propane or Natural Gas Available

Water Available: Yes

Fire Hydrant: Yes

Pumpout Available: No Pumpout

Bathrooms Available: Restrooms w/showers

Electricity Amperage Available: 120 V Standard 15 Amp; 30

Camping Facilities:

Food Available: Food Available (1-5 mi.)

Security Available and Hours On Duty:

## GENERAL INFORMATION AND COMMENTS

Special/Pre-Planned Events and Dates:

Comments:

Photo URL:



Facility Name: Playground Inn

Site ID:

Data Collector (Agency): FWC-FWRI

Survey Type: Planning

Survey Date: 2008-03-13 00:00

Managing Agency: Private

General Manager/Contact Person:

Contact Phone #:

SCAT Description: Okaloosa County Division 2

Physical Address: 198 Brooks St SE, near Liza Jackson Park

City: Ft Walton Beach

State: Florida

Zip Code 32548

County: Okaloosa

## GEOSPATIAL INFORMATION

Latitude (DMS): 30° 24' 4.884" N

Longitude (DMS): 86° 36' 8.862" W

Latitude (DD): 30.40135666

Longitude (DD): -86.60246166

## SITE DESCRIPTION

Site Type: Staging Area; Boat Ramp

Access: Private

Operational Status:

Scale of Staging Area:

Hours of Operation:

Days of Operation: 7 days, Sunrise to Sunset

Water Type:

Water Body Name:

Boat Launch Capability: Boats Under 25 ft

Number of Boat Ramps: 1

Number of Boat Ramp Lanes: 1

Number of Boat Slips: 0

Number of Moorings: 0

Boat Ramp Surface Composition: Gravel/Dirt

Water Depth at End of Boat Ramp: 0 - 2 feet; 2 - 4 feet

Wave Energy at Site: Low

Shoreline Type in Viewable Vicinity: Soft Sand

Access Constraints: No Access Constraints

Crane Capabilities: Not suitable for crane

Collection Point Capabilities:

Parking Capacity for Trailers: 5

Parking Capacity for Cars: 20

Parking Lot Dimensions:

Parking Surface: Paved - Concrete or Asphalt; Dirt/Gravel

Capable for Light or Heavy Equipment and Type:

Boom Available On-Site and Length:

## ADDITIONAL AMMENITIES

Fuels Available: No Fuel

Propane or Natural Gas Available

Water Available: Yes

Fire Hydrant:

Pumpout Available: No Pumpout

Bathrooms Available: No Restrooms

Electricity Amperage Available: 120 V Standard 15 Amp

Camping Facilities:

Food Available: Food Available (1-5 mi.)

Security Available and Hours On Duty:

## GENERAL INFORMATION AND COMMENTS

Special/Pre-Planned Events and Dates:

Comments:

Photo URL:



Facility Name: Brooks Bridge Bait and Tackle

Site ID: OL00121XV

Data Collector (Agency): FWC-FWRI

Survey Type: Planning

Survey Date: 2008-03-13 00:00

Managing Agency: Private

General Manager/Contact Person:

Contact Phone #: 850-243-5721

SCAT Description: Okaloosa County Division 2

Physical Address: 1201 Miracle Strip Kwy

City: Fort Walton Beach

State: Florida

Zip Code 32548

County: Okaloosa

## GEOSPATIAL INFORMATION

Latitude (DMS): 30° 23' 58.410" N

Longitude (DMS): 86° 36' 1.362" W

Latitude (DD): 30.39955833

Longitude (DD): -86.60037833

## SITE DESCRIPTION

Site Type: Staging Area; Boat Ramp

Access: Commercially Owned for General Public Use

Operational Status: Open For Business

Scale of Staging Area:

Hours of Operation: Unknown

Days of Operation: 7 days a week

Water Type: Saltwater

Water Body Name: Santa Rosa Sound

Boat Launch Capability: Boats Under 25 ft

Number of Boat Ramps: 1

Number of Boat Ramp Lanes: 1

Number of Boat Slips: 0

Number of Moorings: 0

Boat Ramp Surface Composition: Poured in place concrete

Water Depth at End of Boat Ramp: 4 - 6 feet; 8 - 10 feet

Wave Energy at Site: Low

Shoreline Type in Viewable Vicinity: Seawall; Soft Sand

Access Constraints: Fenced

Crane Capabilities: Not suitable for crane

Collection Point Capabilities:

Parking Capacity for Trailers: 8

Parking Capacity for Cars: 19

Parking Lot Dimensions:

Parking Surface: Asphalt

Capable for Light or Heavy Equipment and Type:

Boom Available On-Site and Length:

## ADDITIONAL AMMENITIES

Fuels Available: Diesel and Gasoline

Propane or Natural Gas Available

Water Available: Yes

Fire Hydrant: Yes

Pumpout Available: Pumpout Available

Bathrooms Available: Port-a-let

Electricity Amperage Available: 120 V Standard 15 Amp

Camping Facilities:

Food Available: Food Available (1-5 mi.)

Security Available and Hours On Duty:

## GENERAL INFORMATION AND COMMENTS

Special/Pre-Planned Events and Dates:

Comments:

Photo URL: [http://ocean.floridamarine.org/waterphotos/ramp\\_photos/photo\\_id/1208/index.htm](http://ocean.floridamarine.org/waterphotos/ramp_photos/photo_id/1208/index.htm)

Facility Name: Marler Park

Site ID:

Data Collector (Agency): FWC-FWRI

Survey Type: Planning

Survey Date: 2008-03-13 00:00

Managing Agency: Okaloosa County

General Manager/Contact Person:

Contact Phone #:

SCAT Description: Okaloosa County Division 2

Physical Address: 1275 Santa Rosa Blvd

City: Ft Walton Beach

State: Florida

Zip Code 32548

County: Okaloosa

## GEOSPATIAL INFORMATION

Latitude (DMS): 30° 24' 1.020" N

Longitude (DMS): 86° 35' 33.312" W

Latitude (DD): 30.40028333

Longitude (DD): -86.59258666

## SITE DESCRIPTION

Site Type: Staging Area; Boat Ramp

Access: Public

Operational Status:

Scale of Staging Area:

Hours of Operation: 24 hours

Days of Operation: 7 days a week

Water Type: Salt

Water Body Name: Santa Rosa Sound

Boat Launch Capability: RAMP - Boats UNDER 25 FT; RAMP - Boats OVER 25 FT

Number of Boat Ramps: 2

Number of Boat Ramp Lanes: 3

Number of Boat Slips: 0

Number of Moorings: 0

Boat Ramp Surface Composition: Cement or Asphalt

Wave Energy at Site: Low

Water Depth at End of Boat Ramp: 4 - 6 feet

Shoreline Type in Viewable Vicinity: Soft Sand

Access Constraints: No Access Constraints

Crane Capabilities: Not suitable for crane

Collection Point Capabilities:

Parking Capacity for Trailers: 30

Parking Capacity for Cars: 50

Parking Lot Dimensions:

Parking Surface: Paved - Concrete or Asphalt

Capable for Light or Heavy Equipment and Type:

Boom Available On-Site and Length:

## ADDITIONAL AMMENITIES

Fuels Available: No Fuel

Propane or Natural Gas Available

Water Available: Yes

Fire Hydrant:

Pumpout Available: No Pumpout

Bathrooms Available: Restrooms w/showers

Electricity Amperage Available: 120 V Standard 15 Amp

Camping Facilities:

Food Available: Food Available (1-5 mi.)

Security Available and Hours On Duty:

## GENERAL INFORMATION AND COMMENTS

Special/Pre-Planned Events and Dates:

Comments:

Photo URL:



Facility Name: The Landing

Site ID: OL00014ZN

Data Collector (Agency): FWC-FWRI

Survey Type: Planning

Survey Date: 2008-03-13 00:00

Managing Agency: City of Fort Walton Beach

General Manager/Contact Person:

Contact Phone #:

SCAT Description: Okaloosa County Division 2

Physical Address: 139 Brook St

City: Fort Walton Beach

State: Florida

Zip Code 32548

County: Okaloosa

## GEOSPATIAL INFORMATION

Latitude (DMS): 30° 24' 7.584" N

Longitude (DMS): 86° 36' 23.424" W

Latitude (DD): 30.40210666

Longitude (DD): -86.60650666

## SITE DESCRIPTION

Site Type: Staging Area; Boat Ramp; Marina

Access: Government Owned for General Public Use

Operational Status: Open For Business

Scale of Staging Area:

Hours of Operation:

Days of Operation: Open regular schedule, ie. M - F

Water Type: Saltwater

Water Body Name: Choctawhatchee Bay

Boat Launch Capability: Boats Under 25 ft

Number of Boat Ramps: 1

Number of Boat Ramp Lanes: 1

Number of Boat Slips: 6

Number of Moorings: 6

Boat Ramp Surface Composition: Poured in place concrete

Water Depth at End of Boat Ramp: 4 - 6 feet

Wave Energy at Site: Low

Shoreline Type in Viewable Viscinity: Seawall

Access Constraints: No Access Constraints

Crane Capabilities: Not suitable for crane

Collection Point Capabilities:

Parking Capacity for Trailers: 20

Parking Capacity for Cars: 34

Parking Lot Dimensions:

Parking Surface: Asphalt

Capable for Light or Heavy Equipment and Type:

Boom Available On-Site and Length:

## ADDITIONAL AMMENITIES

Fuels Available: No Fuel

Propane or Natural Gas Available

Water Available: No Water

Fire Hydrant:

Pumpout Available: No Pumpout

Bathrooms Available: Flush

Electricity Amperage Available: No Electricity Available

Camping Facilities:

Food Available: Food Available (1-5 mi.)

Security Available and Hours On Duty:

## GENERAL INFORMATION AND COMMENTS

Special/Pre-Planned Events and Dates:

Comments:

Photo URL: [http://ocean.floridamarine.org/waterphotos/ramp\\_photos/photo\\_id/1209/index.htm](http://ocean.floridamarine.org/waterphotos/ramp_photos/photo_id/1209/index.htm)