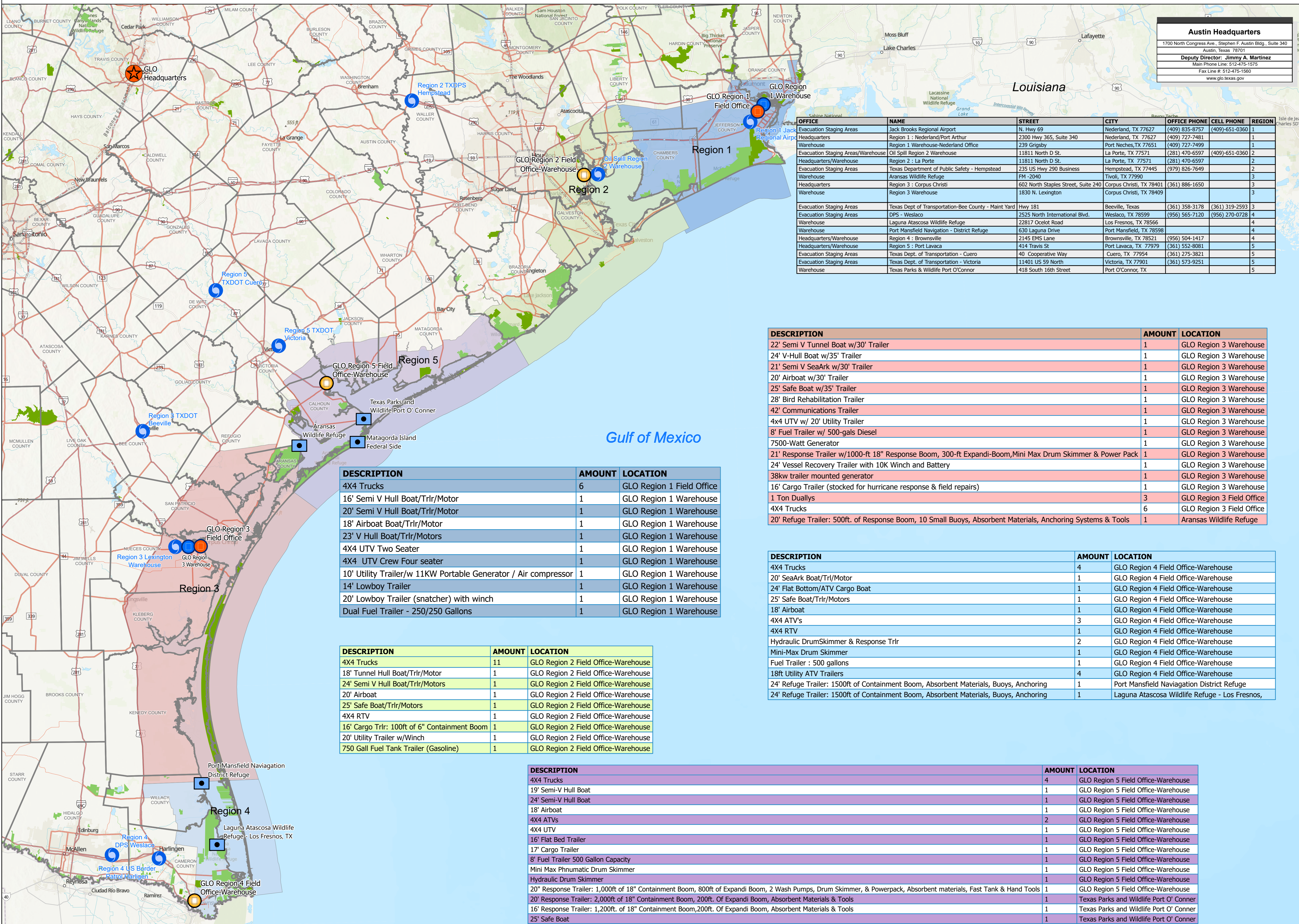


Oil Spill Program Offices, Response Equipment & Evacuation Staging Areas



Austin Headquarters	
1700 North Congress Ave., Stephen F. Austin Bldg., Suite 340 Austin, Texas 78701	
Deputy Director: Jimmy A. Martinez	
Main Phone Line: 512-475-1575	
Fax Line #: 512-475-1560	
www.glo.texas.gov	

Commissioner Dawn Buckingham, M.D.



OFFICE	NAME	STREET	CITY	OFFICE PHONE	CELL PHONE	REGION
Evacuation Staging Areas	Jack Brooks Regional Airport	N. Hwy 69	Nederland, TX 77627	(409) 835-8757	(409)-651-0360	1
Headquarters	Region 1 : Nederland/Port Arthur	2300 Hwy 365, Suite 340	Nederland, TX 77627	(409) 727-7481		1
Warehouse	Region 1 Warehouse-Nederland Office	239 Grigsby	Port Neches, TX 77651	(409) 727-7499		1
Evacuation Staging Areas/Warehouse	Oil Spill Region 2 Warehouse	11811 North D St.	La Porte, TX 77571	(281) 470-6597	(409)-651-0360	2
Headquarters/Warehouse	Region 2 : La Porte	11811 North D St.	La Porte, TX 77571	(281) 470-6597		2
Evacuation Staging Areas	Texas Department of Public Safety - Hempstead	235 US Hwy 290 Business	Hempstead, TX 77445	(979) 826-7649		2
Warehouse	Aransas Wildlife Refuge	FM -2040	Tivoli, TX 77990			3
Headquarters	Region 3 : Corpus Christi	602 North Staples Street, Suite 240	Corpus Christi, TX 78401	(361) 886-1650		3
Warehouse	Region 3 Warehouse	1830 N. Lexington	Corpus Christi, TX 78409			3
Evacuation Staging Areas	Texas Dept of Transportation-Bee County - Maint Yard	Hwy 181	Beeville, Texas	(361) 358-3178	(361) 319-2593	3
Evacuation Staging Areas	DPS - Weslaco	2525 North International Blvd.	Weslaco, TX 78599	(956) 565-7120	(956) 270-0728	4
Warehouse	Laguna Atascosa Wildlife Refuge	22817 Ocelot Road	Los Fresnos, TX 78566			4
Warehouse	Port Mansfield Navigation - District Refuge	630 Laguna Drive	Port Mansfield, TX 78598			4
Headquarters/Warehouse	Region 4 : Brownsville	2145 EMS Lane	Brownsville, TX 78521	(956) 504-1417		4
Headquarters/Warehouse	Region 5 : Port Lavaca	414 Travis St	Port Lavaca, TX 77979	(361) 552-8081		5
Evacuation Staging Areas	Texas Dept. of Transportation - Cuero	40 Cooperative Way	Cuero, TX 77954	(361) 275-3821		5
Evacuation Staging Areas	Texas Dept. of Transportation - Victoria	11401 US 59 North	Victoria, TX 77901	(361) 573-9251		5
Warehouse	Texas Parks & Wildlife Port O'Connor	418 South 16th Street	Port O'Connor, TX			5

DESCRIPTION	AMOUNT	LOCATION
22' Semi V Tunnel Boat w/30' Trailer	1	GLO Region 3 Warehouse
24' V-Hull Boat w/35' Trailer	1	GLO Region 3 Warehouse
21' Semi V SeaArk w/30' Trailer	1	GLO Region 3 Warehouse
20' Airboat w/30' Trailer	1	GLO Region 3 Warehouse
25' Safe Boat w/35' Trailer	1	GLO Region 3 Warehouse
28' Bird Rehabilitation Trailer	1	GLO Region 3 Warehouse
42' Communications Trailer	1	GLO Region 3 Warehouse
4x4 UTV w/ 20' Utility Trailer	1	GLO Region 3 Warehouse
8' Fuel Trailer w/ 500-gals Diesel	1	GLO Region 3 Warehouse
7500-Watt Generator	1	GLO Region 3 Warehouse
21' Response Trailer w/1000-ft 18" Response Boom, 300-ft Expandi-Boom, Mini Max Drum Skimmer & Power Pack	1	GLO Region 3 Warehouse
24' Vessel Recovery Trailer with 10K Winch and Battery	1	GLO Region 3 Warehouse
38kw trailer mounted generator	1	GLO Region 3 Warehouse
16' Cargo Trailer (stocked for hurricane response & field repairs)	1	GLO Region 3 Warehouse
1 Ton Duallys	3	GLO Region 3 Field Office
4X4 Trucks	6	GLO Region 3 Field Office
20' Refuge Trailer: 500ft. of Response Boom, 10 Small Buoys, Absorbent Materials, Anchoring Systems & Tools	1	Aransas Wildlife Refuge

DESCRIPTION	AMOUNT	LOCATION
4X4 Trucks	4	GLO Region 4 Field Office-Warehouse
20' SeaArk Boat/Trl/Motor	1	GLO Region 4 Field Office-Warehouse
24' Flat Bottom/ATV Cargo Boat	1	GLO Region 4 Field Office-Warehouse
25' Safe Boat/Trlr/Motors	1	GLO Region 4 Field Office-Warehouse
18' Airboat	1	GLO Region 4 Field Office-Warehouse
4X4 ATV's	3	GLO Region 4 Field Office-Warehouse
4X4 RTV	1	GLO Region 4 Field Office-Warehouse
Hydraulic DrumSkimmer & Response Trlr	2	GLO Region 4 Field Office-Warehouse
Mini-Max Drum Skimmer	1	GLO Region 4 Field Office-Warehouse
Fuel Trailer : 500 gallons	1	GLO Region 4 Field Office-Warehouse
18ft Utility ATV Trailers	4	GLO Region 4 Field Office-Warehouse
24' Refuge Trailer: 1500ft of Containment Boom, Absorbent Materials, Buoys, Anchoring	1	Port Mansfield Navigatation District Refuge
24' Refuge Trailer: 1500ft of Containment Boom, Absorbent Materials, Buoys, Anchoring	1	Laguna Atascosa Wildlife Refuge - Los Fresnos,

DESCRIPTION	AMOUNT	LOCATION
4X4 Trucks	6	GLO Region 1 Field Office
16' Semi V Hull Boat/Trlr/Motor	1	GLO Region 1 Warehouse
20' Semi V Hull Boat/Trlr/Motor	1	GLO Region 1 Warehouse
18' Airboat Boat/Trlr/Motor	1	GLO Region 1 Warehouse
23' V Hull Boat/Trlr/Motors	1	GLO Region 1 Warehouse
4X4 UTV Two Seater	1	GLO Region 1 Warehouse
4X4 UTV Crew Four seater	1	GLO Region 1 Warehouse
10' Utility Trailer/w/ 11KW Portable Generator / Air compressor	1	GLO Region 1 Warehouse
14' Lowboy Trailer	1	GLO Region 1 Warehouse
20' Lowboy Trailer (snatcher) with winch	1	GLO Region 1 Warehouse
Dual Fuel Trailer - 250/250 Gallons	1	GLO Region 1 Warehouse

DESCRIPTION	AMOUNT	LOCATION
4X4 Trucks	11	GLO Region 2 Field Office-Warehouse
18' Tunnel Hull Boat/Trlr/Motor	1	GLO Region 2 Field Office-Warehouse
24' Semi V Hull Boat/Trlr/Motors	1	GLO Region 2 Field Office-Warehouse
20' Airboat	1	GLO Region 2 Field Office-Warehouse
25' Safe Boat/Trlr/Motors	1	GLO Region 2 Field Office-Warehouse
4X4 RTV	1	GLO Region 2 Field Office-Warehouse
16' Cargo Trlr: 100ft of 6" Containment Boom	1	GLO Region 2 Field Office-Warehouse
20' Utility Trailer w/Winch	1	GLO Region 2 Field Office-Warehouse
750 Gall Fuel Tank Trailer (Gasoline)	1	GLO Region 2 Field Office-Warehouse

DESCRIPTION	AMOUNT	LOCATION
4X4 Trucks	4	GLO Region 5 Field Office-Warehouse
19' Semi-V Hull Boat	1	GLO Region 5 Field Office-Warehouse
24' Semi-V Hull Boat	1	GLO Region 5 Field Office-Warehouse
18' Airboat	1	GLO Region 5 Field Office-Warehouse
4X4 ATV's	2	GLO Region 5 Field Office-Warehouse
4X4 UTV	1	GLO Region 5 Field Office-Warehouse
16' Flat Bed Trailer	1	GLO Region 5 Field Office-Warehouse
17' Cargo Trailer	1	GLO Region 5 Field Office-Warehouse
8' Fuel Trailer 500 Gallon Capacity	1	GLO Region 5 Field Office-Warehouse
Mini Max Phnumatic Drum Skimmer	1	GLO Region 5 Field Office-Warehouse
Hydraulic Drum Skimmer	1	GLO Region 5 Field Office-Warehouse
20" Response Trailer: 1,000ft of 18" Containment Boom, 800ft of Expandi Boom, 2 Wash Pumps, Drum Skimmer, & Powerpack, Absorbent materials, Fast Tank & Hand Tools	1	GLO Region 5 Field Office-Warehouse
20" Response Trailer: 2,000ft of 18" Containment Boom, 200ft. Of Expandi Boom, Absorbent Materials & Tools	1	Texas Parks and Wildlife Port O' Conner
16' Response Trailer: 1,200ft. of 18" Containment Boom, 200ft. Of Expandi Boom, Absorbent Materials & Tools	1	Texas Parks and Wildlife Port O' Conner
25' Safe Boat	1	Texas Parks and Wildlife Port O' Conner

- Field Office
- Warehouse
- Field Office & Warehouse
- ★ Stephen F. Austin Building
- Response Trailers
- Evacuation/Staging Areas

- Oil Spill Regions
- Region 1
 - Region 2
 - Region 3
 - Region 4
 - Region 5



The Texas General Land Office makes no representations or warranties regarding the accuracy or completeness of the information depicted on this map or the data from which it was produced. This map is not suitable for navigational purposes and does not purport to depict boundaries of private and public land.

Produced on 08/05/2024
GLO Oil Spill Logistics Team
GLO Geospatial Technology Services

1:1,027,082

